

## Families and Children's Transformation (FACT) programme update

### Purpose of Report

1. To provide a brief update on progress of the Families and Children's Transformation (FACT) programme.

**“ensuring all Wiltshire families thrive”**

### Background

2. An introductory presentation on the FACT Programme was delivered to the Schools Forum on 28 June 2018 and a further update in October 2018. This document provides an update on key activity and progress in the interim.
3. FACT is a partnership programme designed to achieve whole-system change in order to significantly improve the outcomes of all our children living safely, healthily and happily in their own families and communities.
4. Since the update in October the FACT Programme workstreams have been realigned to focus on the partnership priorities that were outcomes from consultation and co-production activity over the summer and autumn last year.
5. The FACT Programme now contains 6 workstreams each with a number of projects within it. Some projects have continued from the previous iteration of FACT and some other projects have been included to align with the identified priorities.



## Update

### A shared, ambitious Partnership Strategy

6. The FACT Programme ran co-production events with children, families and colleagues across the partnership over the summer and autumn last year to gather insights into what's critically important to them and to **co-produce a shared Partnership Strategy**.
7. The Partnership Strategy is in the final stages of drafting and describes our “relentless determination to enhance social mobility, build resilience and deliver more efficient and impactful services that in turn improve outcomes for children and families whilst delivering savings both to the Local Authority and the wider partnership”.
8. The workstreams within FACT will both inform and be informed by the Strategy – which will be underpinned by our core principles (appendix 2).



### A Good Education for All workstream

9. The **Good Education for All** workstream is focusing on ensuring that all vulnerable children achieve their academic potential and has a particular focus on closing the gap for pupils from vulnerable groups. The workstream is taking a whole school/whole system approach to working in an inclusive and trauma-informed way.
10. Following feedback before the summer break it became apparent that we needed to rethink, together, how best to pursue these aspirations without causing duplication or gaps. This has resulted in the RESET project (the council's project to align the objectives of the Education and Skills directorate with Economic Regeneration as part of its ambition to deliver improved social mobility in Wiltshire) being included within the **Good Education for All** workstream.

11. You will also be aware of the ISOS work to undertake a **strategic review of support, services and provision for children and young people with high needs in Wiltshire**. Feedback and planning sessions following on from consultation and co-production events are to be held this month to develop a whole system approach to inclusion and enabling the establishment of Centres of Excellence in the North and the South of the county.
12. Within the Good Education for All workstream are also the projects around improving the current Education, Health and Care Plans alongside reviewing the role of the SEND Lead Worker and the provision of transport which were previously under the SEND workstream of the FACT Programme.

### **IT-enabled integrated working**

13. Implementation of the second phase of the **Case Management System** which brings together and replaces multiple IT systems across early years, education, early help, SEND and safeguarding into one system is underway.
14. Following the implantation of the social care and early help modules, the second phase includes the roll-out of modules such as Early Years, School Admissions, Education and SEN.
15. The FACT Board's aspiration is to deliver IT-enabled integrated working across agencies by **sharing access with our partners** (within relevant consent and information sharing protocols).
16. A trial is currently being set up with several schools and commissioned services to assess the capabilities of partner access to the new system, understand any limitations on information sharing and determine the timescales and resource required for rollout.
17. All schools and educational settings will need to be signed up to the Wiltshire Information Sharing Charter (WiSC) prior to any access to the new system being granted. Information on WiSC can be found on the Wiltshire Council website - <http://www.wiltshire.gov.uk/wisc>

### **Early Support Roadshows**

18. Following the introduction of the Early Support Hub earlier this year, the FACT Programme has organised a number of early support roadshows this month and next month to engage with partners on a wide range of topics including:
  - Roll out of new Safeguarding Threshold Guidance (includes a new Matrix tool replacing the 'Windscreen')
  - Roll out of new Early Support Assessment (to replace CAF)
  - Future DART development
  - Roll out of IT-enabled joint working (making it easier to provide early support together)

- Relaunch of MAF's – best practice, policy and protocols

If you haven't already signed up, booking for the roadshows can be accessed here - <https://wiltshirescb.safeguardingchildren.co.uk/>

### **Integrated Earliest Support in Communities**

19. Under the **Integrated Multi-Professional Early Support the Integrated Earliest Support in Communities (IESiC)** project has started to look at the early help offer in communities building on the work of several projects/events under the first iteration of the FACT Programme:
  - Local Improvements for Tomorrow (LIFT – formally High Frequency Contacts projects - 3 cohorts with work undertaken in 3 localities
  - Family Led review of Child Protection
  - Stable Housing Project
  - The SEND workstream
  - Partnership event September 2019
  - Partner engagement
20. The key findings from these pieces of work were:
  - Each work group evidenced the opportunity for earlier support or intervention in many cases.
  - Each project understood the issues with departments and partners working in silos
  - Each project identified thresholds as a barrier to help or support when it was first required by the family. Many families had multiple contacts to varying agencies but failed to receive support due to the process filtering out those not 'bad' enough to receive services
  - No one agency had an oversight of the family needs holistically
  - Each project identified a high level of professionals working with a family and the duplication that this has created.
  - Parents told us about gaps in support for their needs.
21. Work has been undertaken to map the early help available within 18 localities and the early findings show that there is significant activity happening in some areas but this is hindered by a lack of common knowledge about what is going on. There are likely to be gaps for primary school age children and adolescents as well as vulnerable, hard to reach families, children and young people.
22. Two workshops have been held so far to begin engagement and is likely to continue with a focus on a community by community approach. Support and engagement from early years and educational settings will be crucial in ensuring that a holistic whole system approach for the future can be developed and implemented complementing the work under **Good Education for All**.
23. The FACT Programme is broad and deep in scope and ambition. Relevant key updates have been included in this paper; to keep up to date with wider FACT developments, the Programme has developed a website which will contain the latest news (at <http://www.wiltshire.gov.uk/children-young-people-fact>). Newsletters will continue to be circulated on the website and via Right Choice.

24. Involvement in the work of the programme is open to all so please contact us by emailing [FACT@wiltshire.gov.uk](mailto:FACT@wiltshire.gov.uk).
- 

**Report Author:**

Theresa Leavy

10 June 2019

**Background Papers**

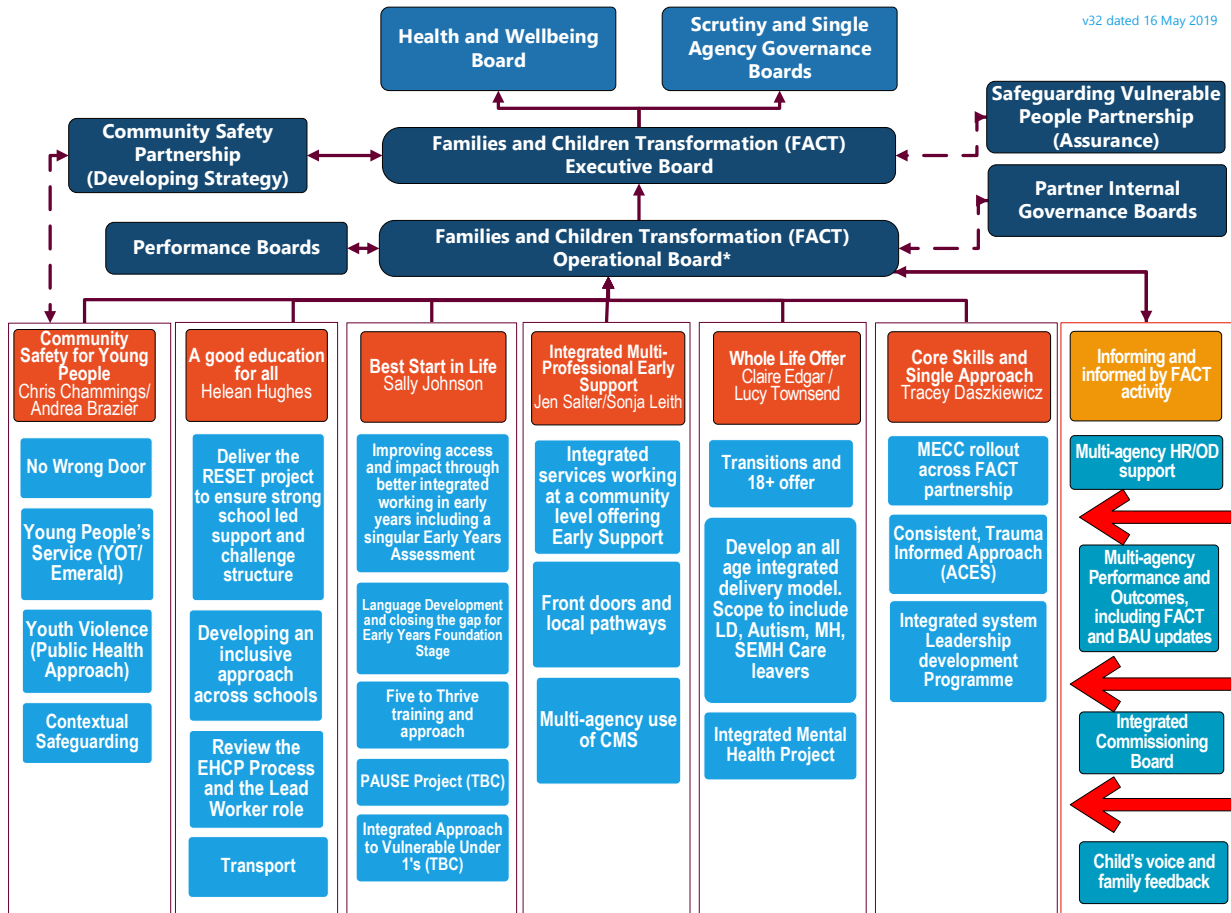
None

**Appendices**

1. FACT Governance Chart

# 1. FACT Governance Chart

v32 dated 16 May 2019



\*To ensure link-up, the FACT Programme Lead sits on both WESB, WETB and ASC Transformation Boards



## 2. FACT Core Principles:

### **Resilient communities with Equity of Opportunity**

We want all our children and young people to reach their full potential by having high aspirations for, and creating opportunities with, those who are disadvantaged through poverty or vulnerability. We will support families in overcoming difficulties in being able to care for their children and each other. Where children cannot continue to live in their immediate or wider family we will ensure they achieve permanence in a timely and effective way.

### **Help when you need it**

We will provide support early to prevent families' difficulties escalating and in doing so improve outcomes and reduce demand for higher tier services.

### **We are Better Together**

As a partnership we will spend wisely and within budget by eradicating duplication, simplifying and integrating processes and improving multi-agency integrated working and collaboration.

### **More time to be with Families**

We will maximise time spent with families and in doing so improve the child's experience of support and build resilience in communities.

### **Investing in our Staff**

We will ensure we are an effective confident workforce with an effective practice framework.